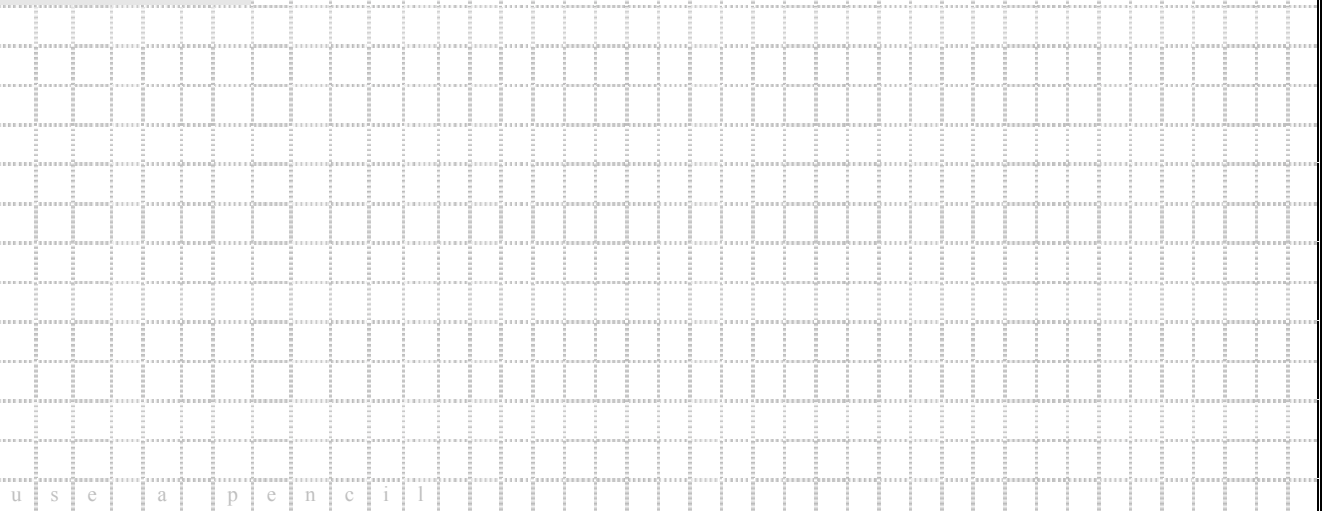


# Home Fire Escape Plan

***In case of fire, you may have less than one minute to escape !***

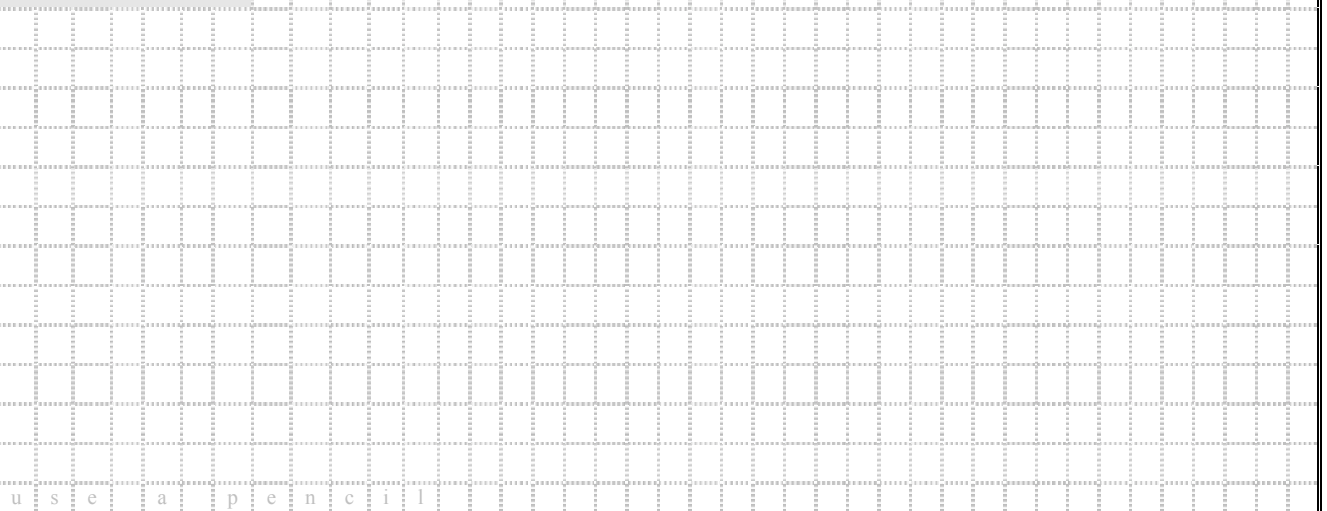
*(Instructions to Complete Home Fire Escape Plan on Back Page)*

**Second Floor**



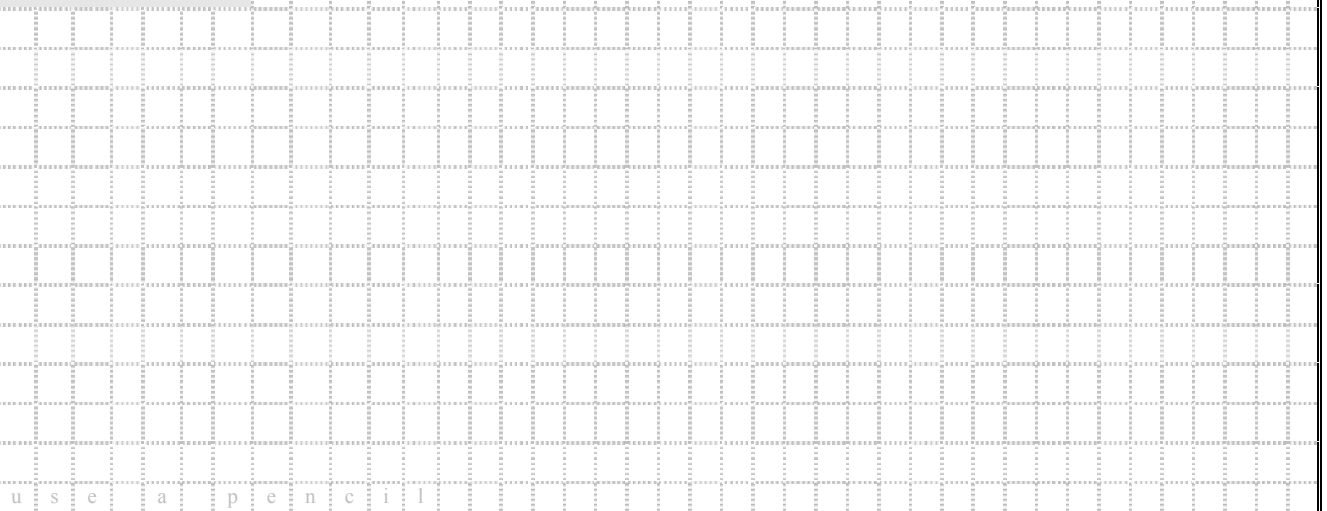
u s e a p e n c i l

**First Floor**



u s e a p e n c i l

**Basement**



u s e a p e n c i l

**Outside Meeting Place:**

## **In Case Of Fire**

- Shout "**FIRE, FIRE, FIRE**" loudly and many times to alert everyone in the home (even if the smoke alarms are sounding).
- Get out of the home immediately using your escape plan exits. (If your main exit is blocked, try the alternate exit).
- If there is smoke, get low and go under the smoke to safety.
- Go to the outside meeting place and make sure everyone is accounted for.
- Call 911 from a neighbour's home or a cell phone.

**DO NOT RE-ENTER A BURNING BUILDING FOR ANY REASON**

***POST THIS PLAN IN A VISIBLE LOCATION***

*(i.e. a refrigerator door).*

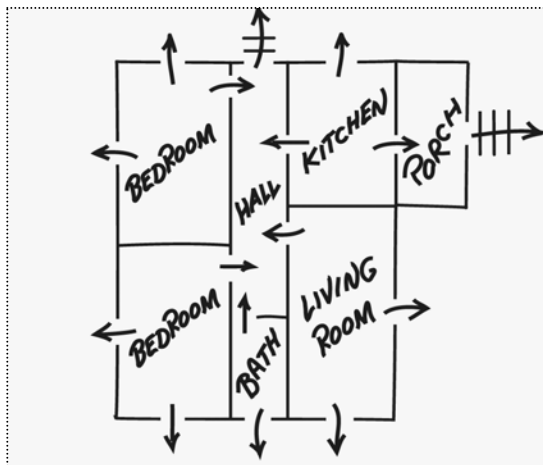
## INSTRUCTIONS TO COMPLETE HOME FIRE ESCAPE PLAN

(Place a check in each box when completed)

- First**, check all of your smoke alarms.  
(There must be one on each storey including the basement and outside all sleeping areas).
- Test them to be sure they are “working”.
- Replace batteries that are missing, disconnected or dead and re-test.
- Replace smoke alarms that are more than 10 years old.  
(For more details on smoke alarms see our brochure “Working Smoke Alarms... It’s the Law, It’s your Life”)
- Next**, start your escape plan with your family.
- Draw a plan of all the floors in your home on the grid including all doors, windows and stairways (use a pencil).
- Show two ways out of each room if possible. The door should be the main exit from each room. An alternate exit could be a window if the main exit is blocked by smoke or fire.
- Choose an outside meeting place (tree, driveway, neighbour’s lawn etc.) and write it on the plan so everyone knows where to meet after escaping the home.
- Does anyone need special assistance to escape? Plan who will and how they will be assisted.
- Finally**, practice your plan as soon as possible after you have finished (and every 6 months after).

## Sample Plan

(first floor)



**Outside Meeting Place:** End of driveway.

## General Safety Information

- Check all doors and windows inside your home and be sure that they are easily opened from the inside. Make repairs if necessary. Make sure that everyone knows how to open them and they are not equipped with locks or devices that require the use of keys or special knowledge to open. (If windows are on an upper level, consider obtaining commercially available home fire escape ladders).
- If you sleep with your bedroom doors closed, install a smoke alarm inside each bedroom.
- If you live in an apartment building, check where the exits are located on each floor and know the emergency procedures for the building. (Contact building management for further information on the “Fire Safety Plan”).
- Watch and pay full attention to whatever you have cooking and stay in the kitchen.
- Do not cook, use candles or smoke while intoxicated.
- Keep matches and lighters out of the reach and sight of children.

**Parents/Caregivers** - Your child has been given this *Home Fire Escape Plan* as a fire safety assignment by Mississauga Fire and Emergency Services. Please assist and encourage your child in accurately completing this *Home Fire Escape Plan* as it may save your lives someday. When completed, please sign and date below. If this is a school homework assignment, have your child return it to their teacher for review. Once returned from the teacher, it should be posted in a visible location in your home (i.e. a refrigerator door).

Parents/Caregivers - Signature and Date x \_\_\_\_\_

**Teachers** – Your student(s) have been given this *Home Fire Escape Plan* as a fire safety homework assignment by Mississauga Fire and Emergency Services. When returned to you, please review, initial and return to each child.

(You are under no obligation to determine the accuracy of this plan, only that the child has completed it as assigned).

The child should then be instructed to take it home to be posted in a visible location (i.e. a refrigerator door).

Teacher - Initial x \_\_\_\_\_



**Fire Prevention Division – Public Education, 300 City Centre Drive, 8<sup>th</sup> Floor, L5B 3C1**

For further information please call 905-615-4377 or visit our website at [www.mississauga.ca/portal/residents/fire](http://www.mississauga.ca/portal/residents/fire)